

# RASMI LED STREET LIGHTING

## High Efficiency LED Lamp Heads

- Universal voltage AC100-277V 50/60Hz.
- High Power Factor >0.9, Low THD Driver.
- Light efficiency up to 150LM/1W, a variety of light distribution angles are optional.
- Simple black appearance, surface anodized, fading and corrosion resistant.
- Available with 0-10V Dimmable, Photocell sensor, Microwave motion sensor.
- A variety of mounting accessory options are available for more application scenarios.

			<b>LM80</b> 150LM/1W	WARRANTY 5 YEARS
OFF	ON			
LIGHT SENSOR		MOTION SENSOR	MAX:40000LM	

6LX ON / 50LX OFF

## PHOTOCELL SENSOR

Automatically switches lighting on at dusk and off at dawn.

- Simpler street light switch control.
- Light sensor illuminance 6Lx ON. Light illuminance 50Lx Off.
- Light sensor with modular design, IP65 protection.
- Mainly used in road lighting, garden lighting, parking lot lighting.





## MICROWAVE MOTION SENSOR

Led street lighting available with Microwave Motion Sensors. Parameter functions of detection area, time delay and daylight threshold can be precisely set via DIP switches.

- Microwave frequency 5.8Ghz  $\pm$ 75MHz
- When the ambient light is sufficient during the day time, the lamp enters a dormant state. When the light is lower than the threshold, the lamp automatically lights when it detects movement.
- Delay, working time and working brightness are user settable. See manual for details.
- Detection angle 360°. Sensing range of 12m diameter at 15m height.



INDUCTION HEIGHT 15M

INDUCTION VERTICAL ANGLE 90°

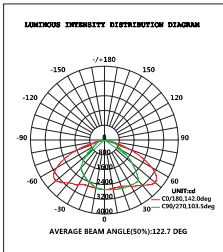
INDUCTION DIAMETER 12M

**rasmi** LED outdoor LIGHTING SERIES

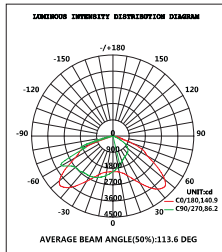


MODEL NO	POWER	P F	LUMINOUS FLUX	BEAM ANGLE	CCT	CRI	SURGE	...
RL100-X-ST6	100W	≥ 0.9	13000LM	TYPE II,III,V	3000-6000K	≥ 72	> 4KV	÷
RL150-X-ST7	150W	≥ 0.9	19500LM	TYPE II,III,V	3000-6000K	≥ 72	> 4KV	

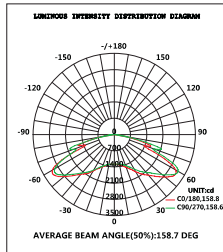
TYPE II 100W



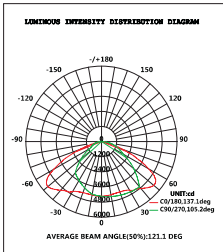
TYPE V 100W



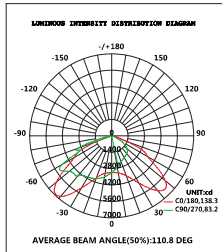
TYPE III 100W



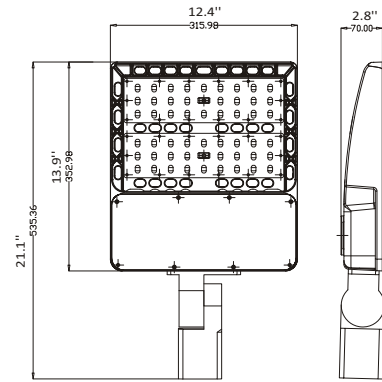
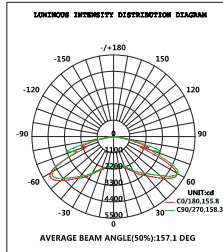
TYPE II 150W



TYPE V 150W



TYPE III 150W

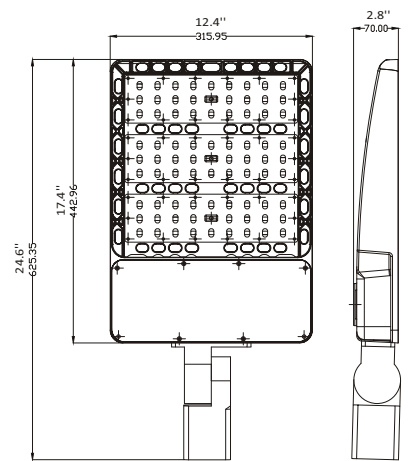
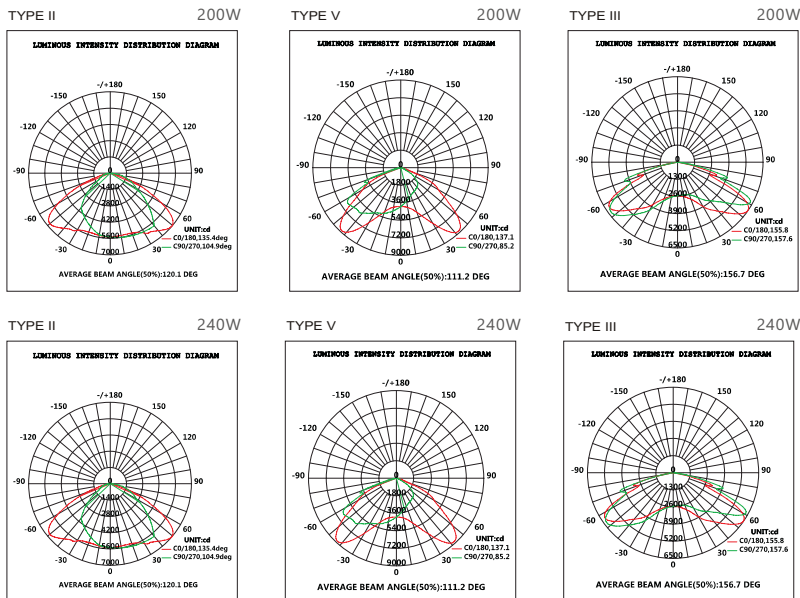


RL100-X-ST6  
RL150-X-ST7  
Unit: inch/mm

**rasmi** LED outdoor LIGHTING SERIES



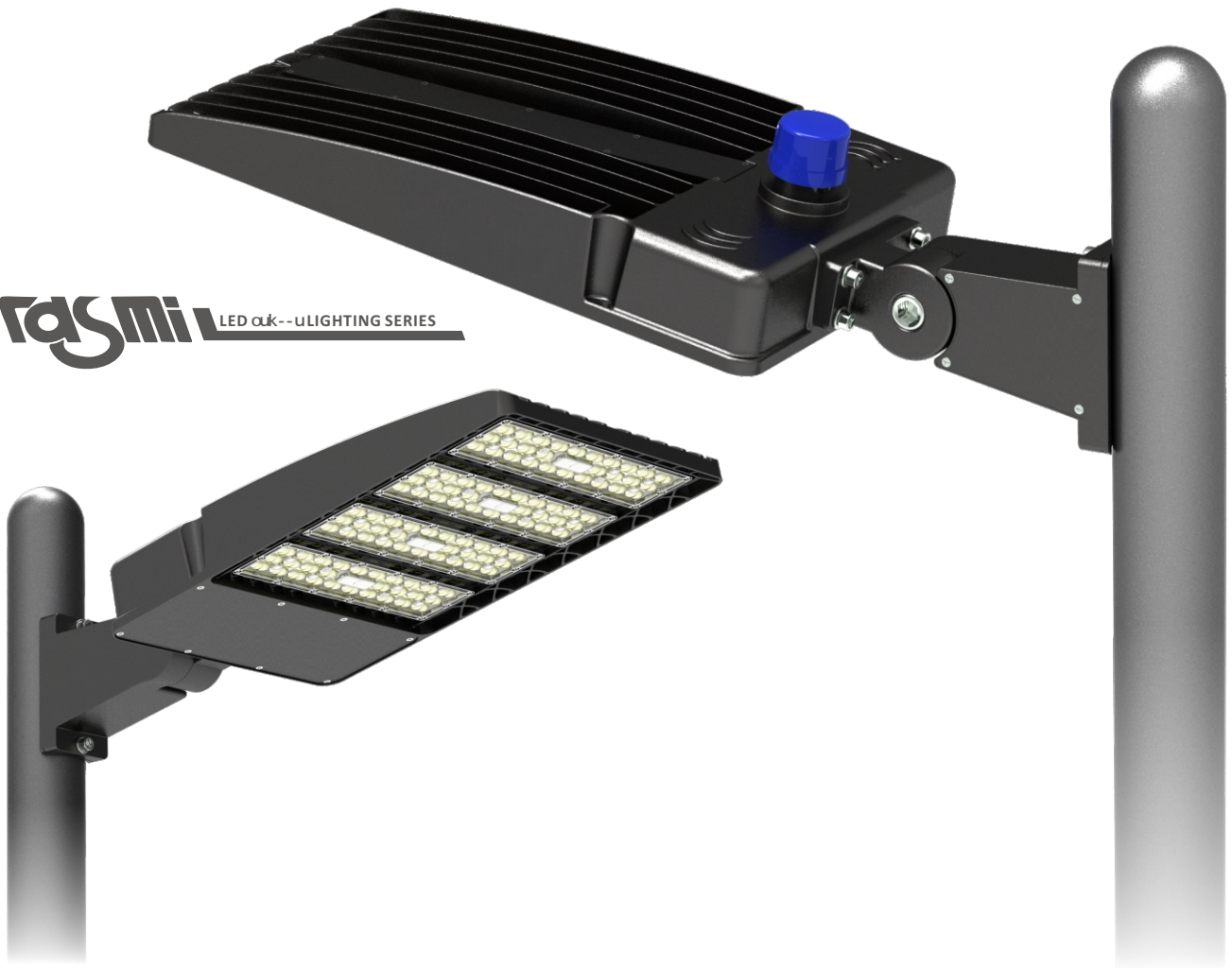
MODEL NO	POWER	P F	LUMINOUS FLUX	BEAM ANGLE	CCT	CRI	SURGE
RL200-X-ST8	200W	≥ 0.9	26000LM	TYPE II,III,V	3000-6000K	≥ 72	> 4KV
RL240-X-ST8	240W	≥ 0.9	32000LM	TYPE II,III,V	3000-6000K	≥ 72	> 4KV



RL200-X-ST8  
RL240-X-ST8

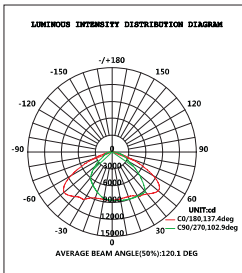
Unit: inch/mm

**rasmi** LED outdoor LIGHTING SERIES

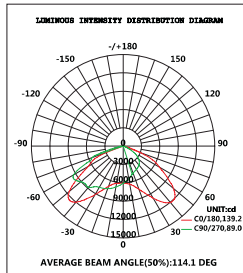


MODEL NO	POWER	P F	LUMINOUS FLUX	BEAM ANGLE	CCT	CRI	SURGE
RL300-X-ST9	300W	≥0.9	39000LM	TYPE II,III,V	3000-6000K	≥72	> 4KV

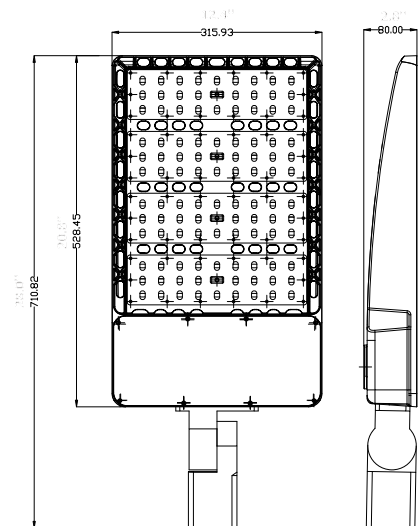
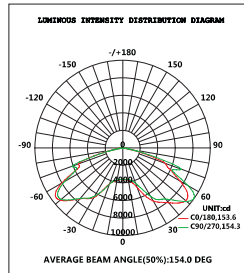
TYPE II 300W



TYPE V 300W



TYPE III 300W



RL300-X-ST9

Unit: inch/mm

# INSTALLATION NOTES

## ELECTRICAL CONNECTIONS-100-240V/277V AC, 50/60HZ PHASE TO NEUTRAL WIRING

**Step1:** Make the following electrical connections:

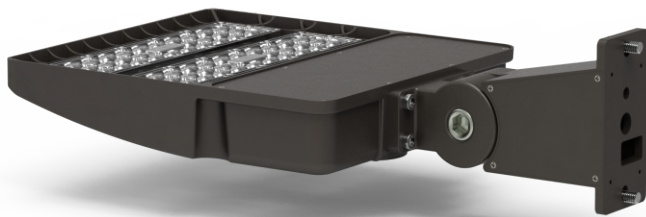
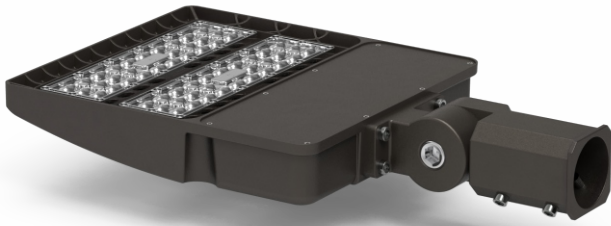
- a. Connect INPUT GROUND conductor to GREEN WIRE position of the terminal block or GROUND conductor of LED driver.
- b. Connect INPUT VOLTAGE conductor to BROWN WIRE position of the terminal block or LINE conductor of LED driver.
- c. Connect INPUT NEUTRAL conductor to BLUE WIRE position of the terminal block or NEUTRAL conductor of LED driver.

**STEP 2:** Make sure all excess input wire is pushed into pole screws are tightened.

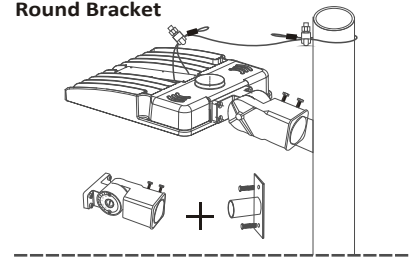
**STEP 3:** Close cover by firmly pushing cover towards fixture, making sure that no wires are pinched and sealing gasket are fully engaged.

**STEP 4:** If the fixture is without a terminal block, please insulate all electrical connections with wire nuts suitable for at least 90°C.

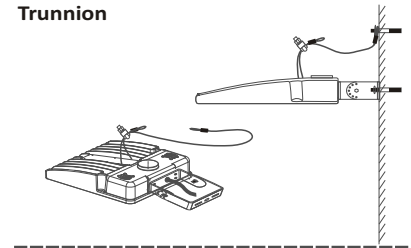
**STEP 5:** After installation, seal is waterproof between fixture and pole.



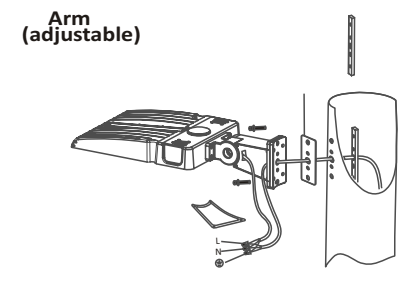
**Round Bracket**



**Trunion**



**Arm  
(adjustable)**



**Wall Mounting**

